

儿童唱游音乐呼拉圈
Children Singing & Playing Music Hoop Dance

AGE
4+

★原创音乐 Music

莫扎特

Wolfgang Amadeus Mozart

魔

笛遊樂場

设计 Design

胡恩威
Mathias Woo

黎达达荣
Lai Tat Tat Wing

音乐 Music

孔奕佳
Edgar Hung

声音演出
Vocal Performance

林二汶
Eman Lam

一铺清唱
Yat Po Singers

呼拉圈编舞
Choreographer (Hoop)

许傲群
Grace Hoop

BAUHAUS
MAGIC FLUTE
PLAYGROUND

21-22/12

珠海华发中演大剧院
横琴歌剧厅

Zhuhai Huafa &
CPAA Grand Theatre



分场 SCENES

形状



SHAPE

认识圆形、正方形、三角形就会知道物件是如何组成
Understand the formation of objects from circles, squares and triangles.

比例



PROPORTION

量度身体的比例，识别身边物体长阔高
Measure our body ratios and identify the length, width, and height of nearby objects.

物料



MATERIAL

发掘各种物料特性
Discover the characteristics of different materials.

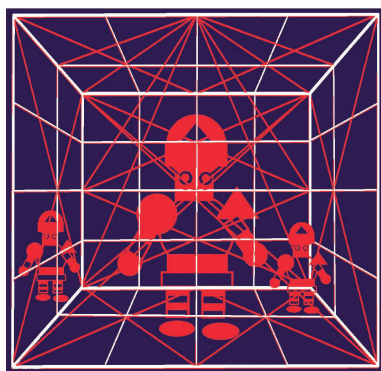
颜色



COLOUR

红蓝黄可调出各种颜色，令我们联想不同温度和心情
By mixing red, blue, and yellow, we can create different colours which associate with different temperatures and feelings.

空间



SPACE

透过光影，我们看见深度和空间
Through light and shadow, we can see depth and space.

建筑



ARCHITECTURE

建筑让我们了解人与人之间的关系
Architecture allows us to understand interpersonal relationships.

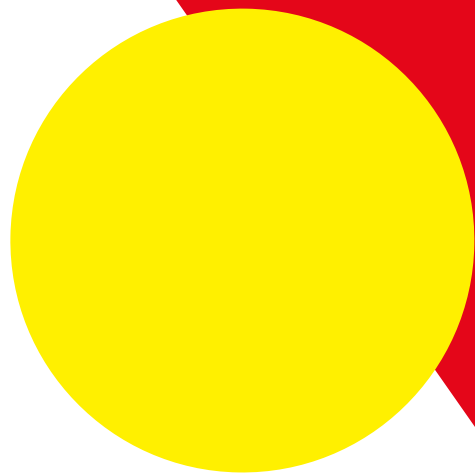


BAUHAUS WAS AN ART AND ARCHITECTURE SCHOOL IN THE TWENTIETH CENTURY OF GERMANY, WHICH CAUSED GREAT IMPACT ON MODERN ART, DESIGN, ARCHITECTURE AND CREATIVE EDUCATION! THROUGH UNDERSTANDING BAUHAUS, WE CAN LEARN TO OBSERVE THINGS IN OUR DAILY LIVES.

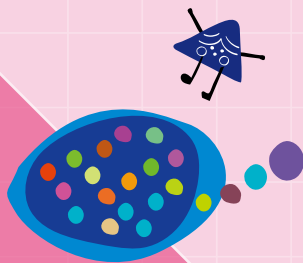
BAUHAUS

是20世纪初于德国的一所艺术与建筑学校，其风格及思想对现代艺术、设计、建筑及创意教育影响深远！认识BAUHAUS，使我们学懂观察日常生活。

WWW.BAUHAUS.DE/EN/



歌词 LYRICS



颜色歌 COLOURS SONG

原曲: Bei Männern, welche Liebe fühlen

声演: 林二汶 一铺清唱

早安早安 绿色清早

Good Morning Green is Morning

Wake up Wake up 快乐的清早

绿色草地 Green Green Grass

Green Forrest 绿色树林 (Morning 早上)

Street is Green Playground is Green (公园街道绿色)

Morning is Green under the Trees (绿绿树荫叫早晨)

It's Noon It's Noon 太阳在正午

蓝蓝天空 Blue is the Sky

It's Noon It's Noon 太阳在正午

蓝色的海 Blue is the sea

蓝色玫瑰 The Rose is Blue (It's Beautiful The Rose is Blue)

Blue Butterfly 蓝蝴蝶 (清风海浪 It's Noon It's Blue)

Wind is Blue Wave is Blue (大踏步正午天天蓝)

Sun Set Sun Set The Sky is Yellow

黄黄的小屋 树木加上艳红

Sun Set Sun Set Make Everything Red and Yellow

黄昏色彩因你变化

蓝色玫瑰 变紫玫瑰 (Red and Blue make Purple)

Yellow and Red make Orange (小屋子树木变了色)

Red and Blue make Purple (日落后变了紫色)

傍晚色调 蓝蓝深调 (Evening In the Evening)

Deep Deep Dark Blue (深深夜晚蓝调)

In the Deep Deep Dark Blue Night (Deep Deep Dark Blue)

Deep Deep Dark Blue (深深夜晚蓝调)

In the Deep Deep Dark Blue Night (Deep Deep Dark Blue)

And there is the Yellow White Moon (晚空天上)

In the Dark Blue Night (月色衬深深蓝)

形状歌 SHAPES SONG

原曲: Der Hölle Rache kocht

in meinem Herzen

声演: 一铺清唱

Square

Square正方

圆——形 Cir——cle

三——角 Tri——angle

三角

Dot——line

点——线

点线面

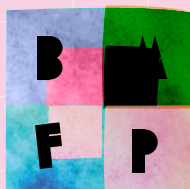
点——线

Plane

Square正方

圆——形 Cir——cle

三——角 Tri——angle



歌词 LYRICS



比例歌 PROPORTION SONG

原曲: Pa ... pa ... pa ...

声演: 一铺清唱

细细Small
Big Big Big 大
细—Small
长—Long
短—Short
矮—哟矮哟 Shorter
高—哟高哟 Taller
疏疏密密 狭小狭窄
Denser or More Sparse
大中细码 Small Large Medium
大中细码 Small or Large
You're Small or Large
Small Large or Medium

Measure 量度
量度 Measure
比例
Proportion
What is Proportion?
比例系乜东东?
比高矮 Tall or Short
比粗细 Thick or Thin
比多少
比短短 长长度度
计算 Measure
比比例Compare

Tall Taller
高 高哟 高哟
Short Shorter
矮 矮哟 矮哟
Taller Shorter

度度度计算 Calculate Measure
计算Calculate 量度 Measure
长阔高
量量量 度Measure
Bigger Bigger Bigger Bigger Smaller
计算对比 Compare Calculate
度度度计算Calculate Measure
计算Calculate量度 Measure
长阔高
量量量 度Measure
Longer Shorter
计算对比 Compare Calculate
高哟 矮哟 高哟 矮哟
多哟 少哟 多哟 少哟
疏疏密密密
比—例Compare
Taller Shorter
Taller Shorter (Bigger Smaller)
More Less More Less
More Less More or Less
比比比计算Calculate
比—例 比例 Proportion
(P—Proportion)
比比比比比例
比例



空间歌 SPACE SONG

原曲: Dies Bildnis ist bezaubernd schön
声演: 一铺清唱

如 光
It's Light
Let there be light
由光照亮
You'll see there're Shapes Colours Proportion
Here comes the Spaces when there is light

空 间 照亮时有许许多多
大 小 红黄蓝绿 形状
远近阔窄深浅高高低低
Farther Smaller Closer Bigger

房子 公园市镇课室街市
What is this Space
What will you do
In this Space
上课游玩 读书跑步
Is it for singing or dancing
这个空间
In this Space
感觉是什么? (What is your feeling?)
柔柔亮光
明明亮光
Space is cool Space is warm
Is it your bedroom or your garden?
Is this space is big or is this small?
大小 空间 要放什么进去?
花园街道书包礼堂
空 间
What do you feel in this space?



歌词 LYRICS

建筑歌 ARCHITECTURE SONG

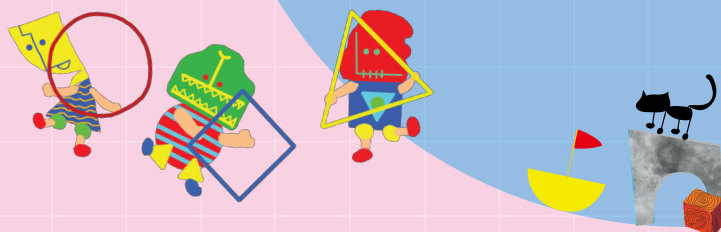
原曲: Finale I: Zum Ziele führt dich diese Bahn
声演: 陈浩峰

Live and Play
建筑物 游乐生活

形状 Shapes 色彩 Colours
Proportion 比例 空间
Space 物料 Materials
Build Houses
Houses 建筑
Live and Play
建筑物 游乐生活
My Home My Home My Mom and Dad
有爸爸 妈妈 我的家
Bauhaus 建造 房屋
Build Houses Many Good Houses
房屋好好建造

圆 正方 三角形
Red Yellow Blue
钢筋塑胶 Glass
Build Smaller Bigger
Architecture
Live and Play
建筑物 游乐生活
Friends and Friends and Families
Build Houses Houses Many Houses
Bauhaus 建造房屋
Build Houses Many Good Houses
城市 好好建造

Live and Play



团队 TEAM

原创音乐 莫孔特
概念、导演及设计总监 胡恩威
视觉及动画设计 黎达荣
呼拉圈编舞 许傲群
音乐总监、编曲、和声编排 孔奕佳
填词 陈浩峰
声音演出 林二汶、钟家诚
演出及木偶制作 钟家诚、杨承德
谢昊丹、黄伟国、Jason Kui
电话机(录音)

Original Music Wolfgang Amadeus Mozart
Concept, Director & Design Director Mathias Woo
Visual & Animation Designer Lai Tat Tat Wing
Choreographer (Hoop) Grace Hoop
Music Director, Arrangement & Vocal Arrangement Edgar Hung
Lyricist Cedric Chan
Vocal Performance Eman Lam, Yat Po Singers
Performers & Puppet Production Carson Chung, Ellen Hong,
Lin Chieh-Min, Don Tse, Luka Wong, David Yeung
Electric Guitar (Recording) Jason Kui

Production Manager &
Stage Manager Chow Chun-yin
Lighting Designer Mak Kwok-kit
Sound Designer Chan Wing Chan
Video Production Carmen Chan, Johnny Sze
Video Operator Zeta Chan
Deputy Stage Manager Oniki Chan
Assistant Stage Manager Charmaine Cheng
Rehearsal Master Charming Siu
Make-up & Hair Billie Siu
Wardrobe Bonnie Chan

制作经理及舞台监督 周俊彦
灯光设计 麦国辉
音响设计 陈冠杰
录像制作 陈嘉敏、陈颖
录像控制 施栋梁
执行舞台监督 陈斯葵
助理舞台监督 陈安琪
排练统筹 郑敬君
化妆及发型 霍惠欣
服装助理 陈伟儿

Translation (Publicity) Vicky Leong
Graphics Rachel Chok, Stephanie Loo
Promotional Video Wong Sze-mei, Wing Chan
Photographer (Publicity) Joe Lau
Graphic Design Assistant Coco Cheung
Graphic Exchange Director, Producer Wong Yuewai
International Director and Finance Jacky Chan
Company Manager (Administration) Doris Kan
Company Manager (Programme) Cedric Chan
Assistant Artistic Director Bowie Chow
Senior Programme Manager Luka Wong
Public Relations and Publicity Ho Yin-hei
Programme Manager

英文翻译(宣传品) 梁惠琪
平面设计 翟桐、卢雪雯
宣传短片 王思薇、陈颖
宣传照摄影 Joe Lau
平面设计助理 张健行
国际交流总监/监制 黄裕伟
艺团经理(节目) 简溢雅
助理艺术总监 陈浩峰
高级节目经理 周宝仪
公关及宣传 黄伟国
节目经理 何彦羲



进念·二十面体 香港人的实验剧团

联合艺术总监
荣念曾、胡恩威

进念·二十面体于1982年成立，为香港九个专业表演艺术团体之一，是面向世界的实验艺术团体，曾获邀前往演出及交流的城市遍及欧、亚、美，推动跨越文化、跨越界别、跨越地域创意艺术交流，拓展文化艺术新领域，实验与探索「舞台空闻」不同形式和内容的可能性。自2009年起举办「国民艺术教育计划·艺术与设计系列」，结合展览、剧场演出、讲座及多元化的教育活动，展示中华文化的艺术特色和现代意义，成绩获国内外赞誉。

Zuni Icosahedron THE HONG KONG AVANT-GARDE

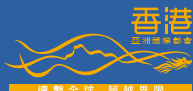
Co-Artistic Directors
Danny Yung, Mathias Woo

Zuni Icosahedron, founded in 1982, is one of the nine major professional performing arts companies in Hong Kong and an international experimental theatre company. With the diversification of theatrical arts as objective, Zuni has been invited to Europe, Asia, and America for performance and exchange. For many years, Zuni has been experimenting with creative arts, proactively promoting fresh aspects of Hong Kong's culture and more, actively exploring the different possibilities of form and content within the "Theatre Space", and constantly expanding the boundaries of experimental art and social innovation. Since 2009, Zuni has organised the "National Arts Education Programme - Art & Design Series". By presenting exhibitions, workshops, talks, theatrical performances and guided tours, Zuni aims to enable young people and the general public of Hong Kong to know more about traditional Chinese culture.

zuniseason.org.hk



香港特別行政區政府
駐粵經濟貿易辦事處



匯聚全球 超越界限